

How do you effectively address

RISK

In this rapidly changing world?



Marketplace is evolving.....

U.S. Senate panel puts self-driving cars in fast lane

Your Terrible Work Commute May One Day Be Solved by Personal Aircraft

Telemedicine Platform Is Quickly Gaining Traction in Fast Growing Market

Macron wants to set up 'EU agency on disruptive innovation'

French President looks to science, technology and education to revive Europe – and gives a political boost to Moedas proposal for a new innovation council

Robots Replacing Workers At Shake Shack

New York Post, Wednesday, October 4, 2017 8 AM

Hotels staffed by robots in Japan

12 emerging technologies have a potential economic impact of \$14 trillion and \$33 trillion a year in 2025

Mobile Internet, Automation & IoT → 70%

McKinsey Global Institute

Biggest security breaches in the 21st century



human error and poor security practices are reported as the root cause of most security incidents

87%



of board members and C-level executives have said they lack confidence in their organization's level of cybersecurity.
EY GISS 2016



143 million users | 2017

Application vulnerability was unpatched due to human error and technology failures.



Sweden Transport Agency

3 million users | 2017

Unvented IT workers in other countries have access to details of people registered in Swedish government and police databases.



110 million users | 2013

Hackers had gained access through Target's third-party HVAC vendor.



YAHOO!



INCREASING DEMAND

- Organizations are struggling to keep up with increasing corporate and regulatory compliance requirements.
- Non-compliancy may result in direct fines or indirect costs.





- Ad-hoc procedures & policies → fragmented controls, teams operating in silos and fragmented reporting



- There is no 'one size fit' framework
 - COBIT framework does not address privacy needs / HIPAA framework does not address cardholder data requirements.



Integrate two or more

Forms the foundation of security and control framework

Concepts

Integrating two or more Frameworks



Choose a Base

Broad and only minimal specific to add on.



Control Mapping

Breaking down elements into family or tiers.



Critical Controls

Control objectives must-have vs. good-to-have



Indexation

Control Language & Indexation



Data Flow

Understand data flow (why and how information is collected processed, transmitted & stored)



Scope & Impact Management

Strong scope management process. Reduce scope by consolidate and purg unwanted data.



Data Lifecycle Program

Provide business with tools and process to enable the management of data elements



Change Management

Consistent, Singular Approach

Is your Internal Control Framework still relevant?



Precision

Are your controls precise enough to detect significant issues?



Cloud Security

When your systems move into the cloud, can you expect controls to follow?

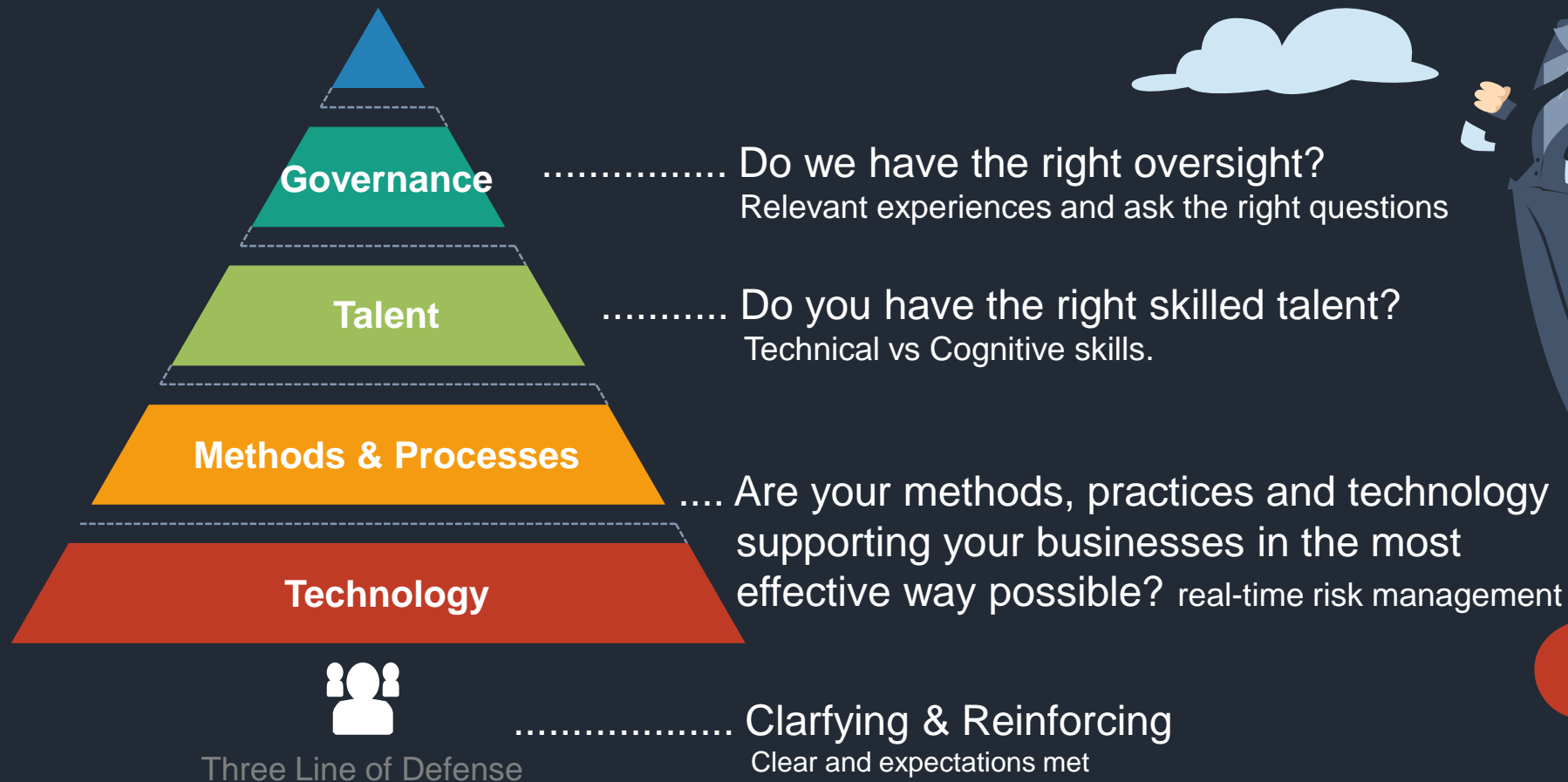


Robotics Process Automation

Will RPA cause a business continuity issue?



Re-evaluate Governance Program



The 4th Ingredient



Governance Program

Re-evaluating governance framework to keep up with the changes and making the necessary enhancements

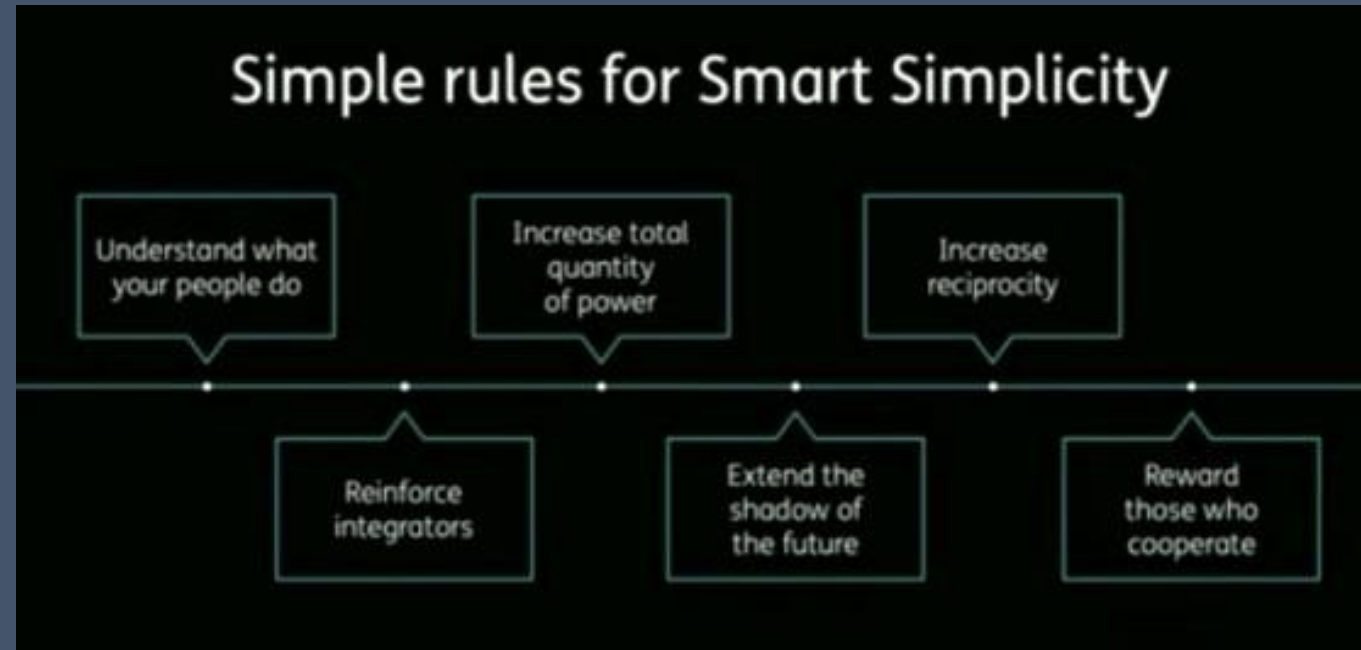


Internal Control Framework

Relevant internal controls framework integrated with risk management practices



Smart Simplicity – Yves Morieux



Creating an AGILE Control Environment



#113 - "AGILE DEVELOPMENT, EXPLAINED" - BY SALVATORE IOVENE, FEB. 21ST 2009

[HTTP://WWW.GEEKHEROCOMIC.COM/](http://www.geekherocomic.com/)

Creating an AGILE Control Environment



Governance

Create commitment thru clear vision.

Use Risk & Control teams as Integrators.

Improve accountability of risks in the business.



Sustainable Operating Model

Use Risk Management Solutions.

Dynamic reporting to increase transparency. **Hold data owner**

responsible



Manage Emerging Risks

Stop trying to perfectly protect your organization.

Invest in detection and response capabilities

Define processes to react quickly.

CFOs & CIOs have mutual interest.



Improve Analytics

Make DATA a 4th pillar alongside people, process and technology.

Real time risk management & data analytics techniques for higher-quality



Automate & Secure by Design

Leverage on automated controls

Built-in security & automation as part of design.

Drive operation efficiencies and improve controls



Behavioral Change Program

Shape and strengthen Organization Culture.

(People-centric security, Strengthen accountabilities,

Message from the top)

